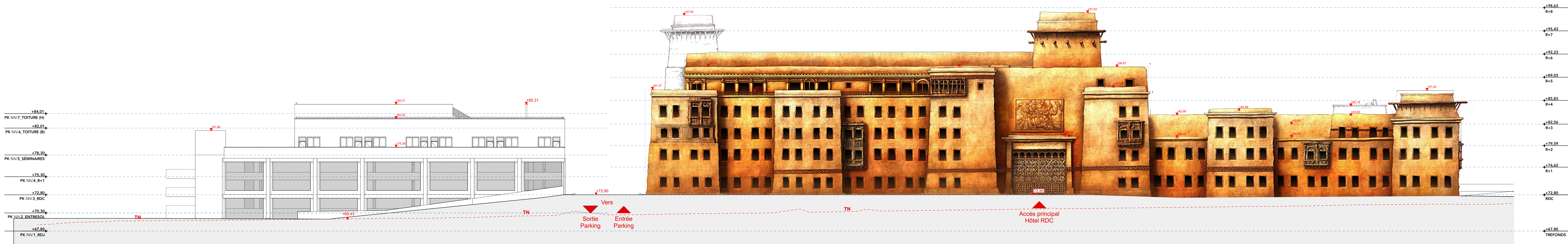
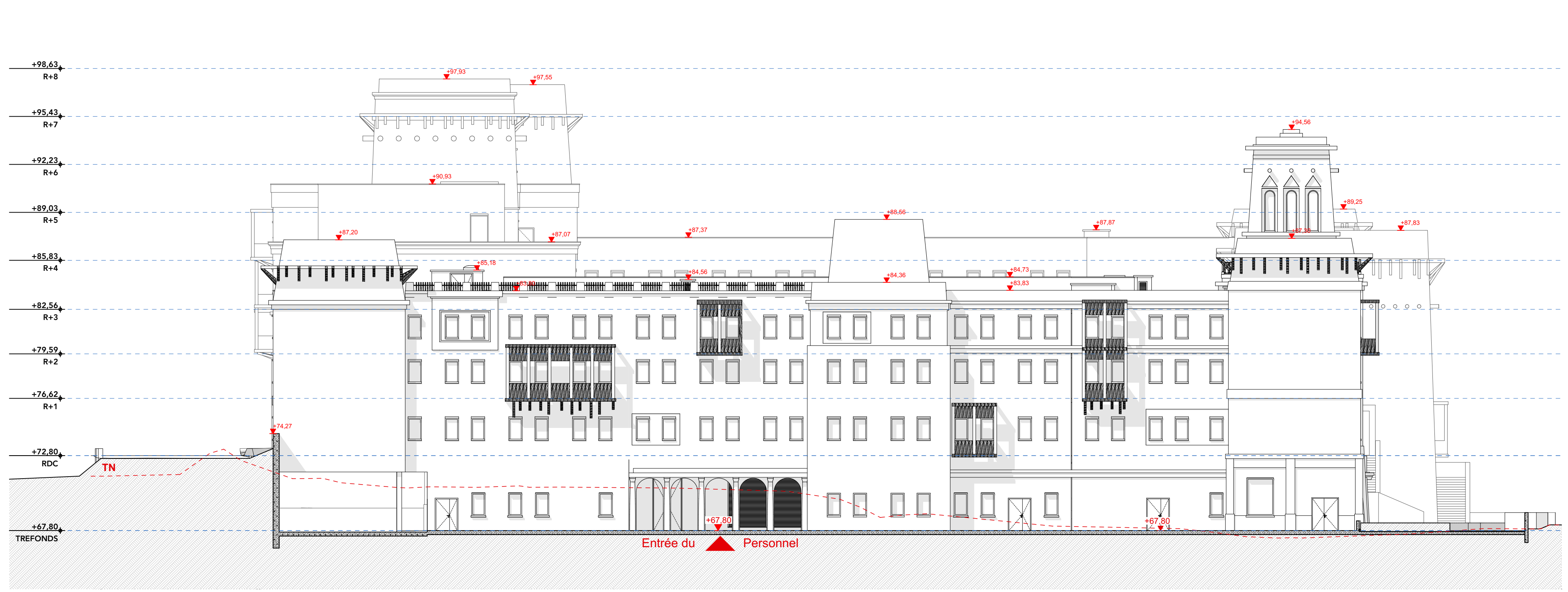


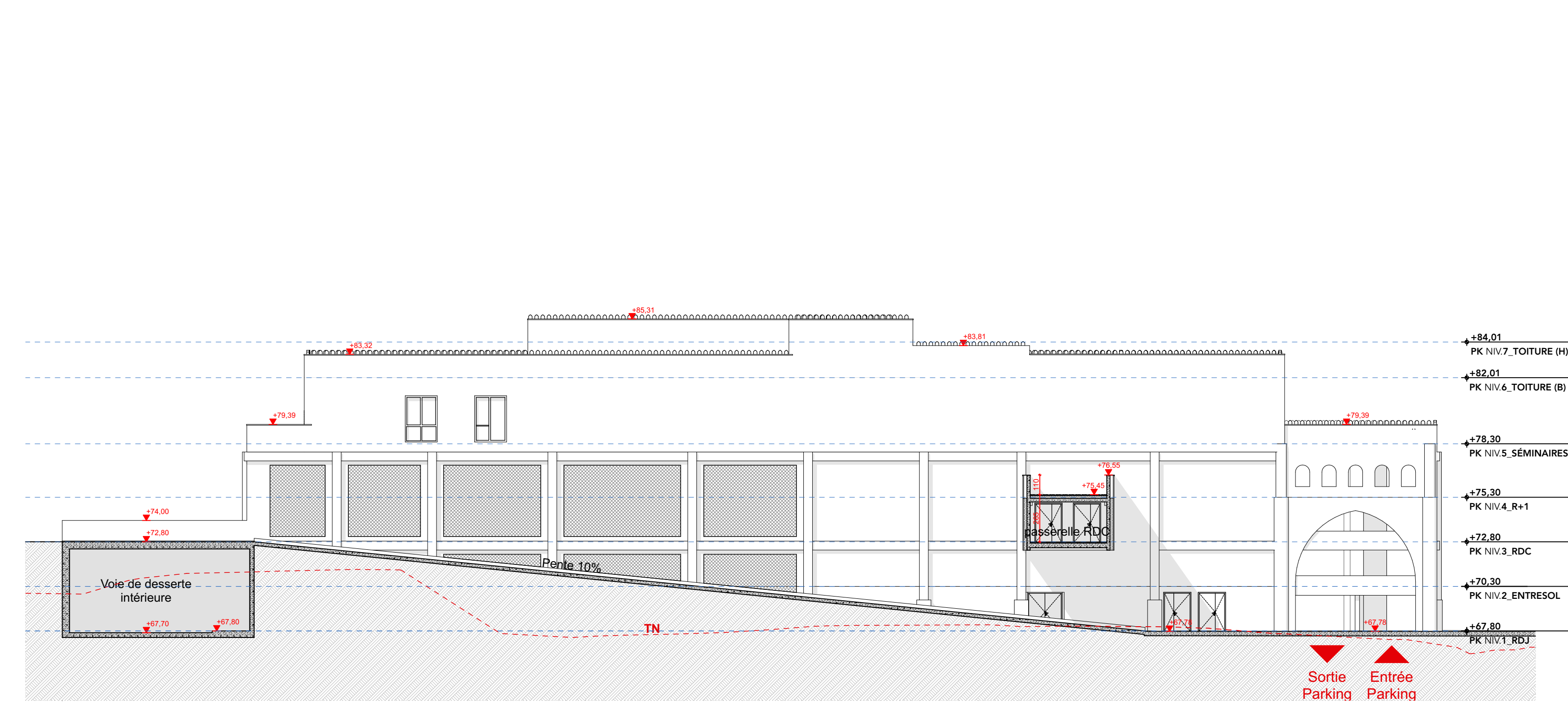
**A** Façade EST Hôtel + Parking 1:200



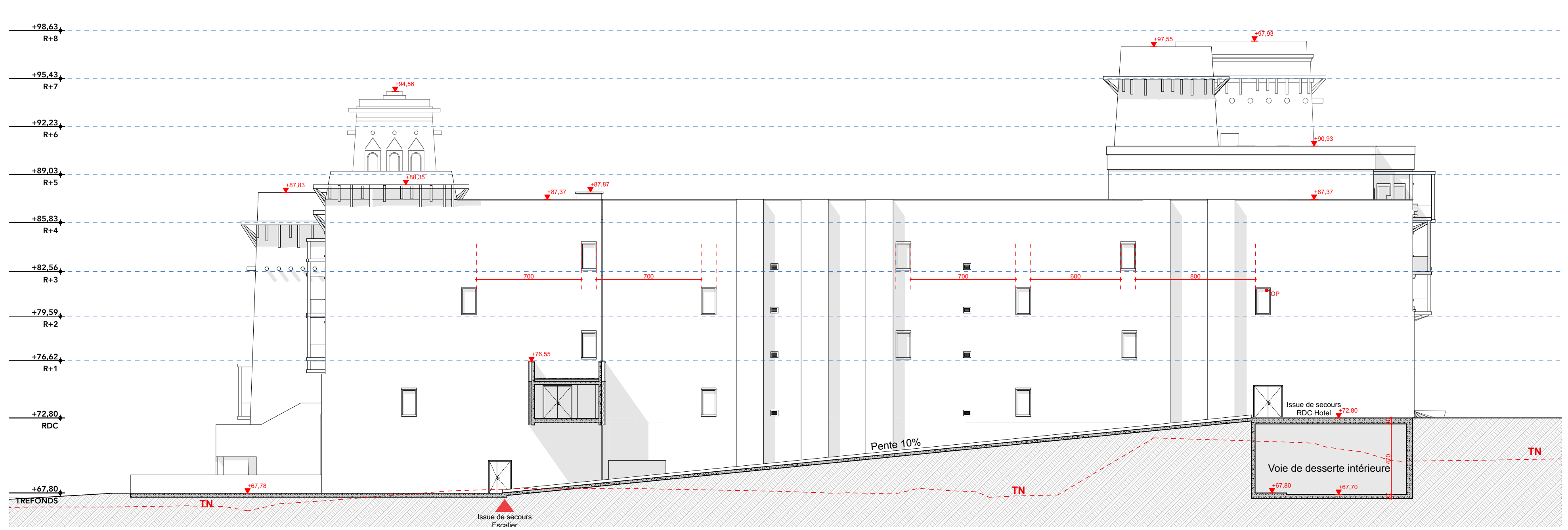
**B** Façade OUEST Hôtel + Parking 1:200



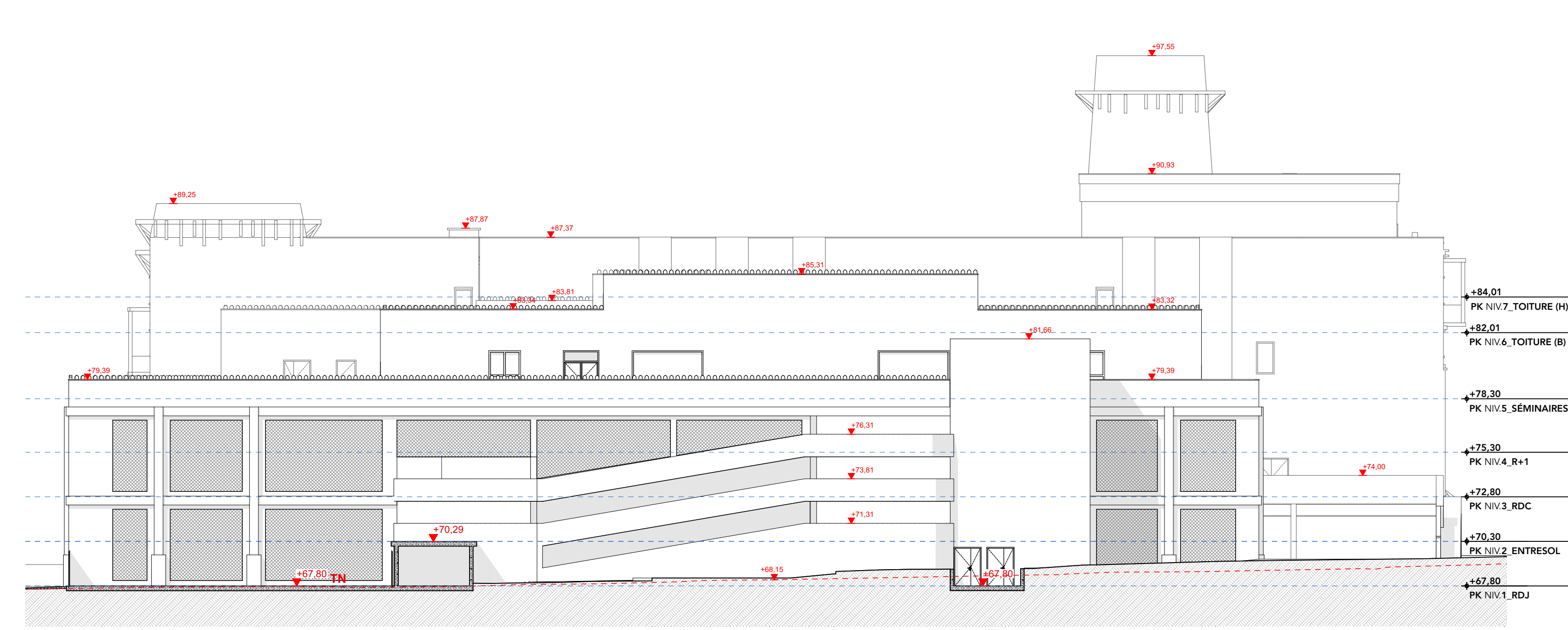
**C** Façade SUD Hôtel 1:200



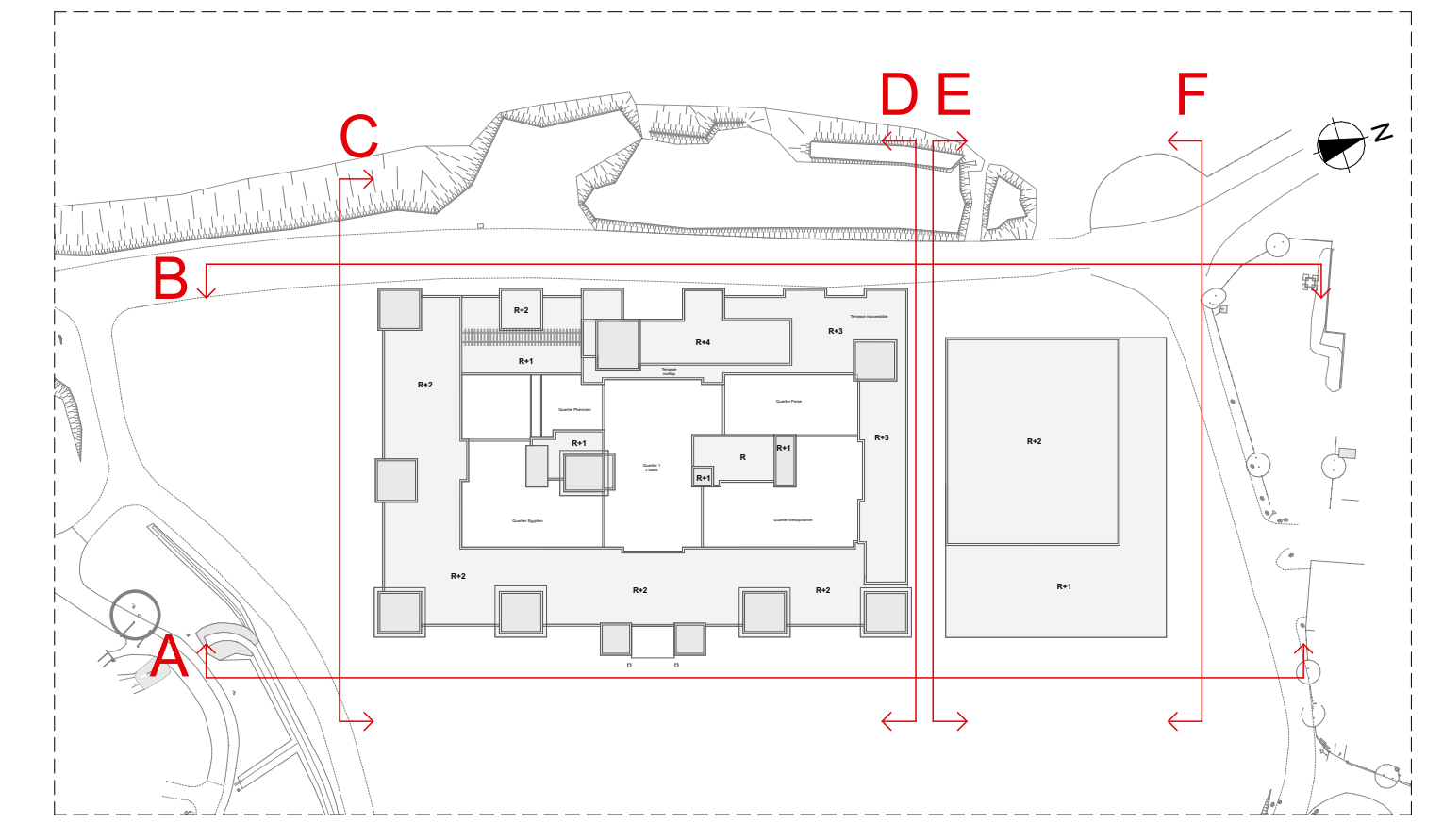
**E** Façade SUD Parking 1:200



**D** Façade NORD Hôtel 1:200



**F** Façade NORD Parking 1:200



Construction d'un complexe hotelier de 300 chambres  
60128 PLAILLY  
HOTEL 4

Maitres d'Ouvrage: GREVIN ET CIE - PARC ASTERIX  
Architecte: QUADRI FIORE ARCHITECTURE  
Conception Scénographique: QUATORZE IG  
Coordonneur Technique: Groupe QUORCON  
Fédération: Studio Fahrenheit  
SE Plaines / Coordination des études: egis  
Travaux: ALEP Atelier Lieux et Paysages  
100: Lollier  
SAS QUADRI FIORE ARCHITECTURE  
THERRY RETIF PRODUCTIONS  
QUATORZE IG  
ALMA CONSULTING  
LM3C  
ENEOR

DOSSIER SECURITE INCENDIE  
4-2 Façades Extérieures  
PC.39/40

| Projet | Emetteur | Phase | Lot | Type | Zone | Niveau | N° document | Indice | STATUT                                 |
|--------|----------|-------|-----|------|------|--------|-------------|--------|--|
| H4     | QFA      | PC    | ARC | FAC  | TZ   | TS     |             | 0      | AS<br>1:000<br>02/08/2023<br>Sept 2023 |